

Sketching Analog Clocks (A)

Sketch each time on the clock face above it.

1.



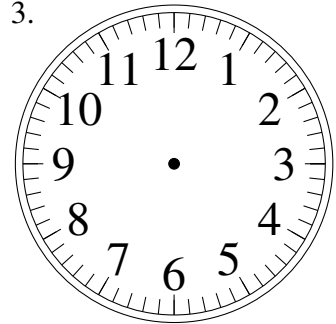
10:37.15

2.



6:03.45

3.



12:44.30

4.



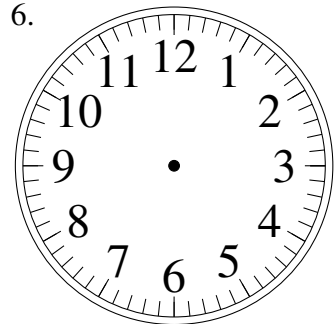
7:10.15

5.



8:11.00

6.



1:06.30

7.



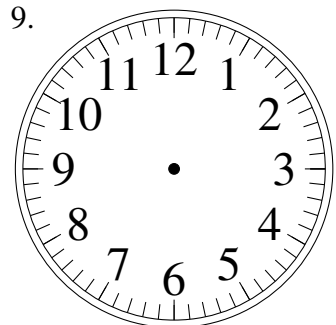
12:13.15

8.



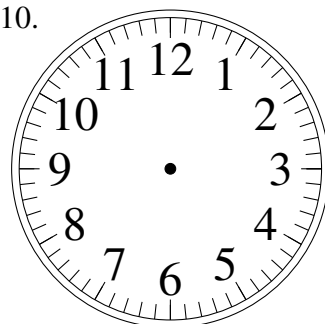
7:15.15

9.



11:15.00

10.



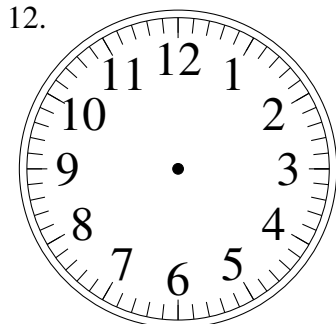
1:17.00

11.



2:31.00

12.

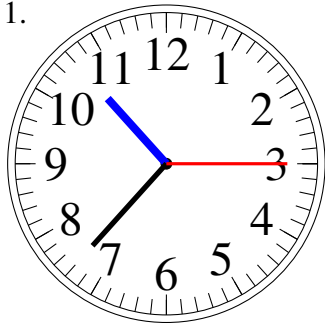


3:46.45

Sketching Analog Clocks (A) Answers

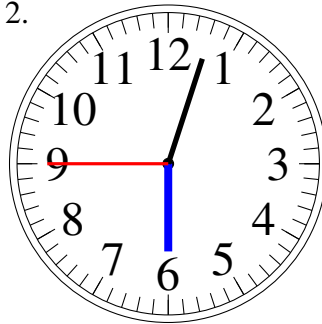
Sketch each time on the clock face above it.

1.



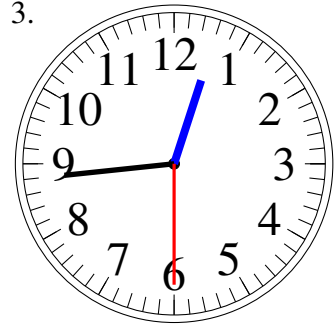
10:37.15

2.



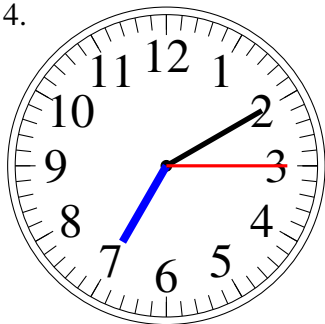
6:03.45

3.



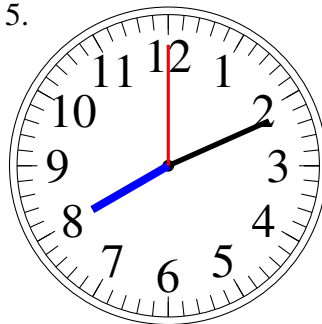
12:44.30

4.



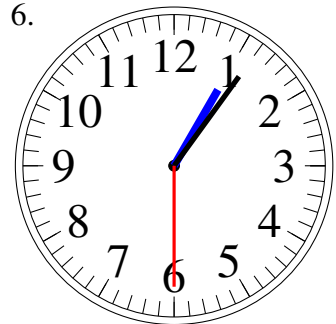
7:10.15

5.



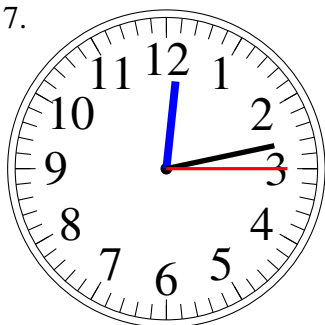
8:11.00

6.



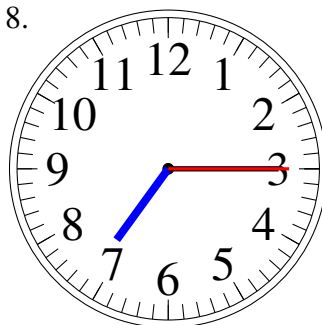
1:06.30

7.



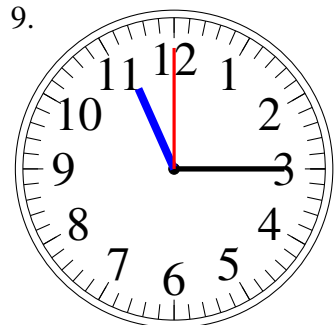
12:13.15

8.



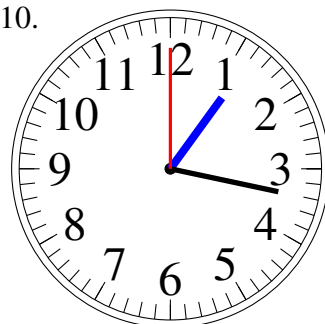
7:15.15

9.



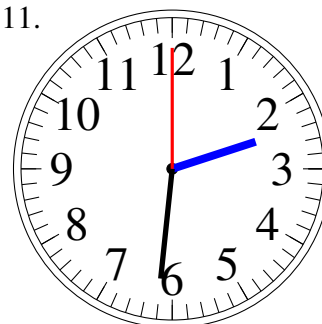
11:15.00

10.



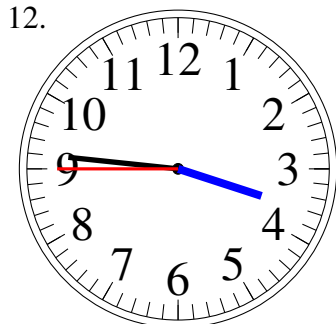
1:17.00

11.



2:31.00

12.



3:46.45

Sketching Analog Clocks (B)

Sketch each time on the clock face above it.

1.



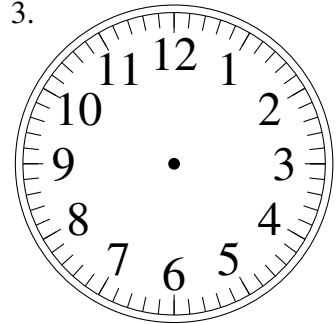
12:22.45

2.



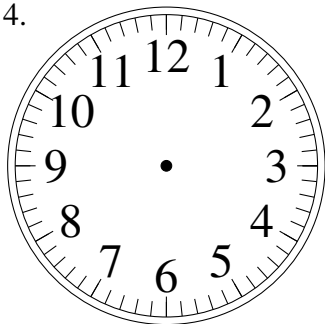
3:08.45

3.



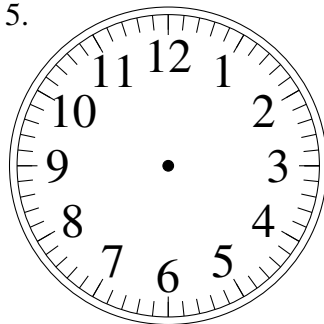
4:08.30

4.



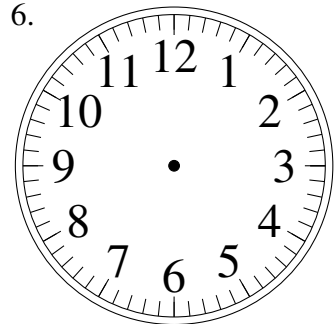
2:23.15

5.



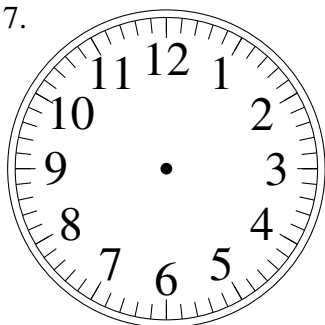
2:37.00

6.



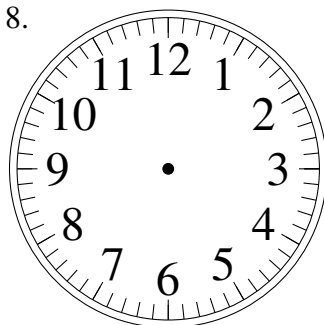
4:22.15

7.



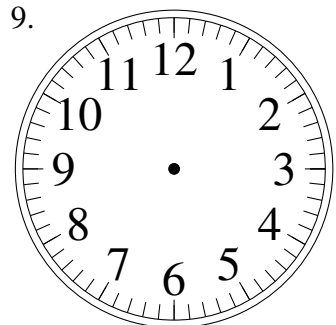
5:14.15

8.



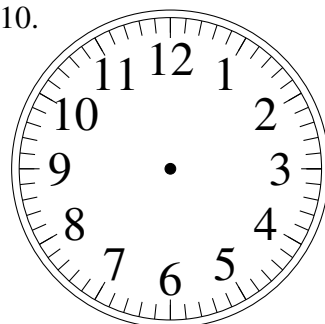
1:53.00

9.



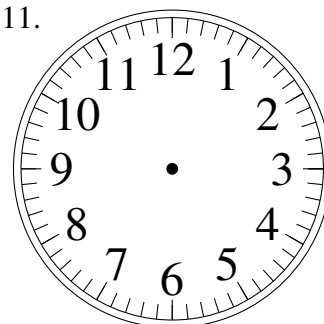
12:51.15

10.



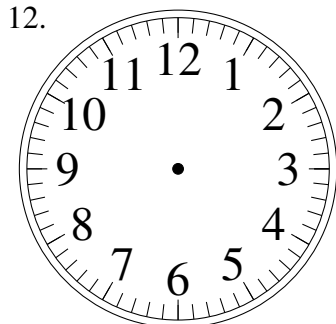
4:07.00

11.



4:42.45

12.

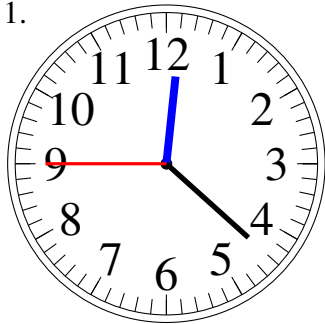


5:25.00

Sketching Analog Clocks (B) Answers

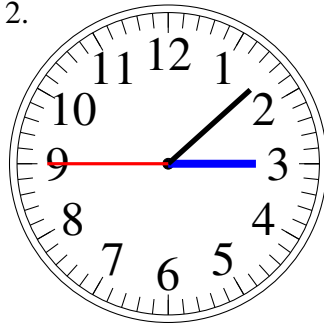
Sketch each time on the clock face above it.

1.



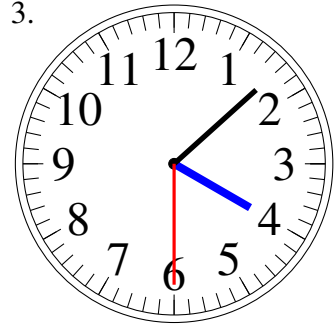
12:22.45

2.



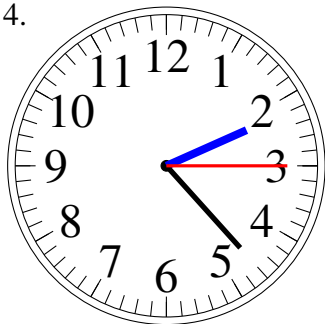
3:08.45

3.



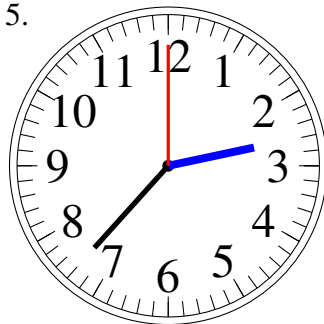
4:08.30

4.



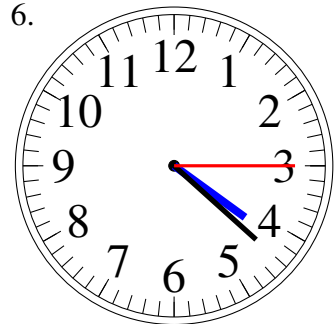
2:23.15

5.



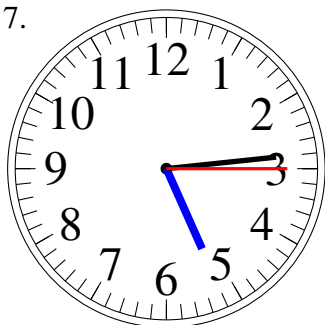
2:37.00

6.



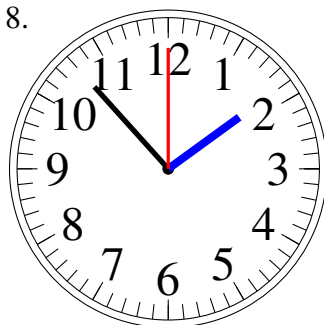
4:22.15

7.



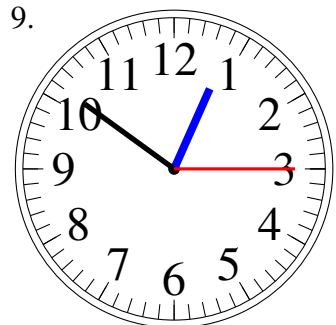
5:14.15

8.



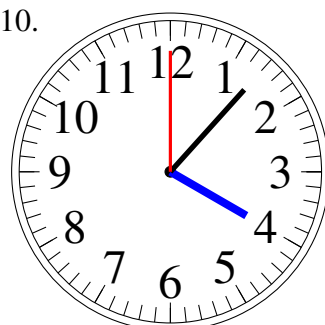
1:53.00

9.



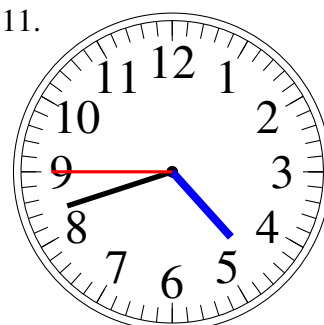
12:51.15

10.



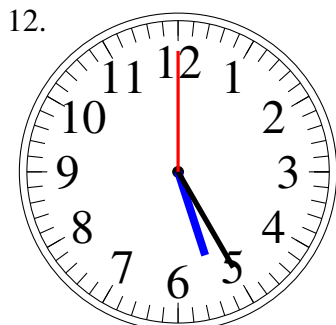
4:07.00

11.



4:42.45

12.

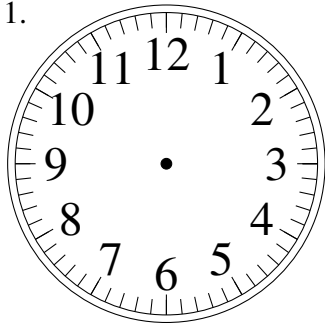


5:25.00

Sketching Analog Clocks (C)

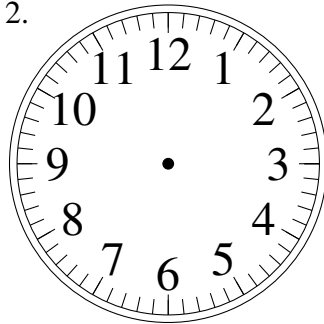
Sketch each time on the clock face above it.

1.



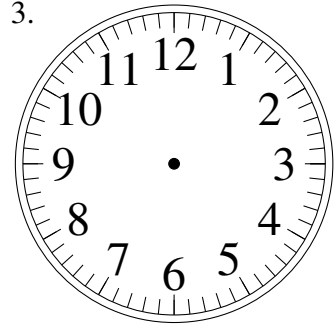
8:24.45

2.



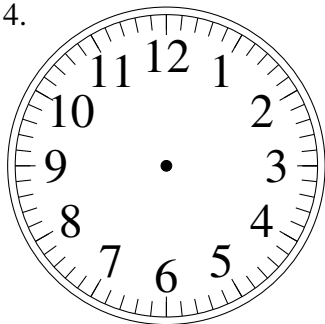
6:15.00

3.



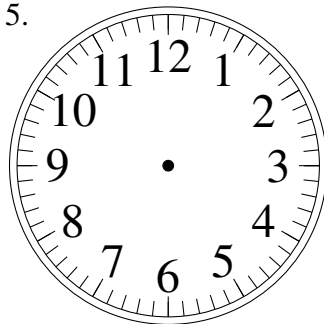
2:55.30

4.



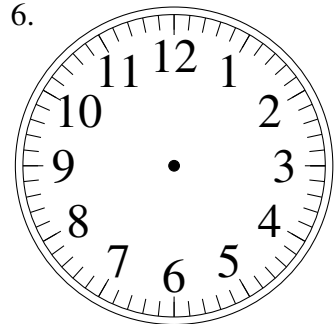
12:37.30

5.



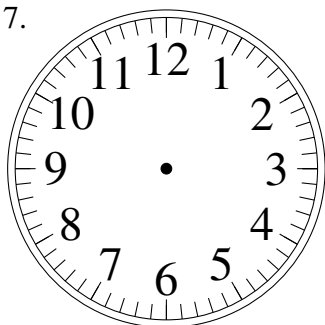
8:07.15

6.



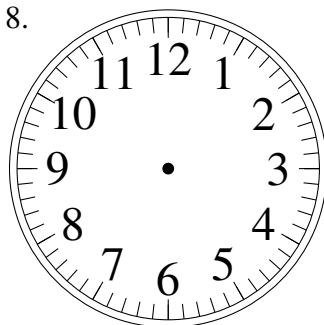
1:03.00

7.



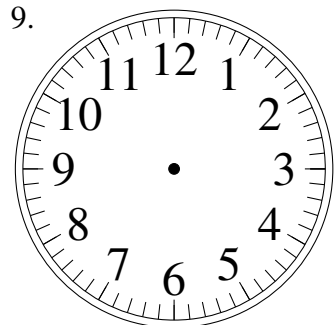
8:02.00

8.



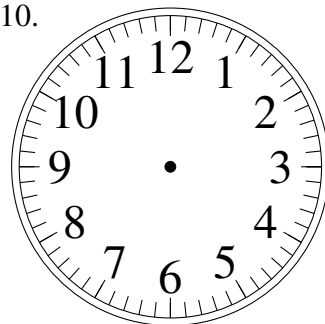
9:34.15

9.



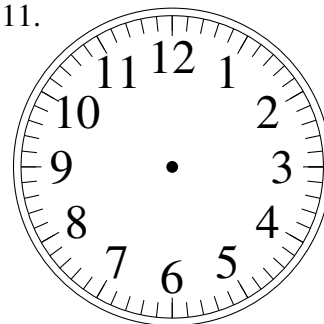
3:12.00

10.



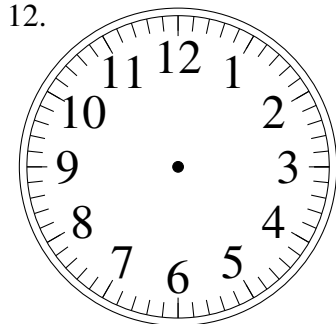
1:43.30

11.



11:32.00

12.

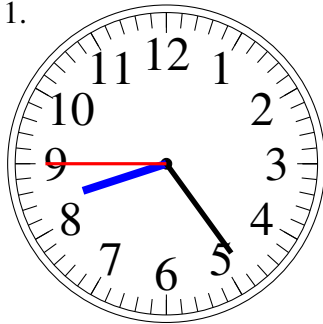


2:01.45

Sketching Analog Clocks (C) Answers

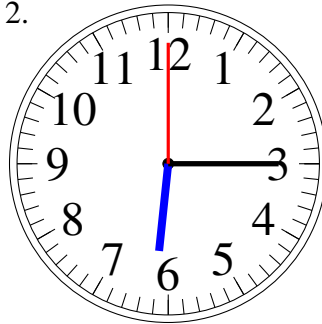
Sketch each time on the clock face above it.

1.



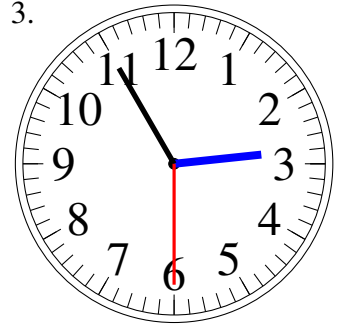
8:24.45

2.



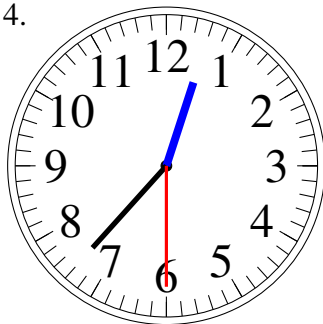
6:15.00

3.



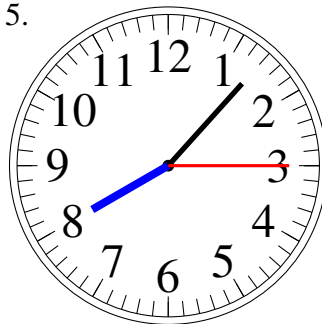
2:55.30

4.



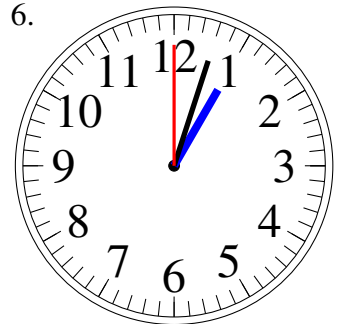
12:37.30

5.



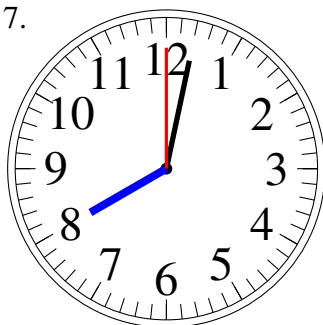
8:07.15

6.



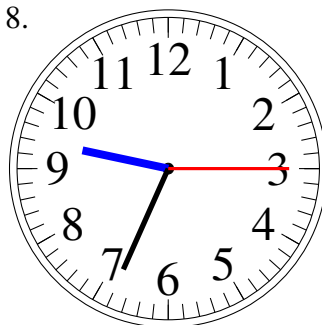
1:03.00

7.



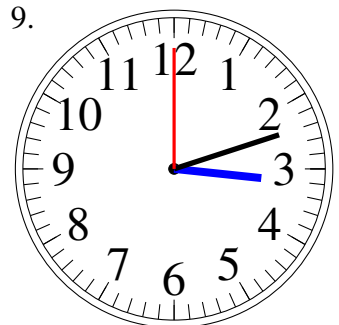
8:02.00

8.



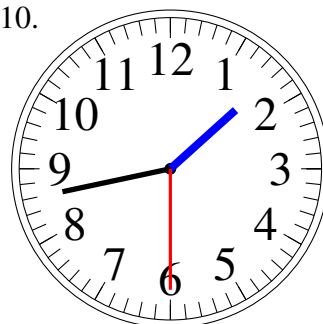
9:34.15

9.



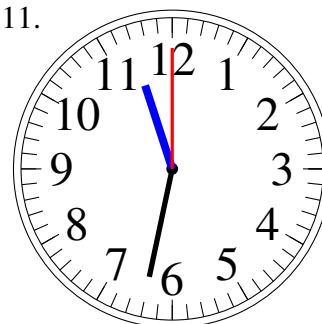
3:12.00

10.



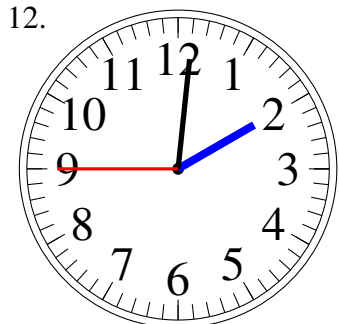
1:43.30

11.



11:32.00

12.

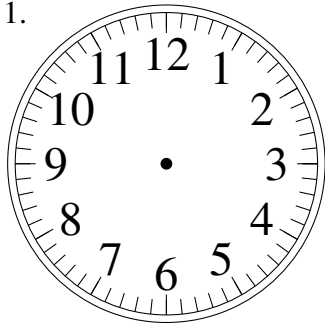


2:01.45

Sketching Analog Clocks (D)

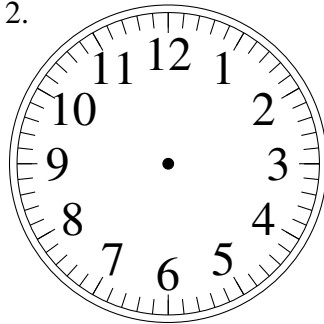
Sketch each time on the clock face above it.

1.



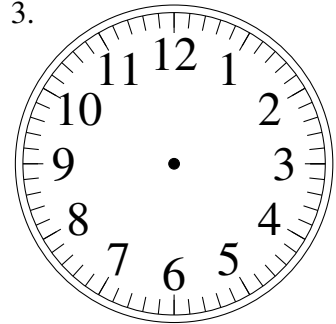
5:18.30

2.



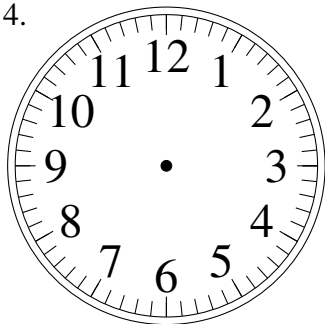
12:29.00

3.



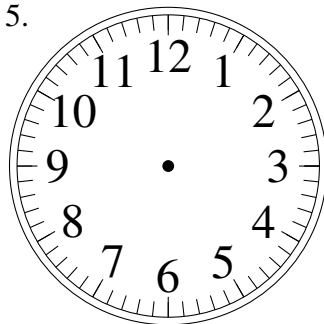
3:00.45

4.



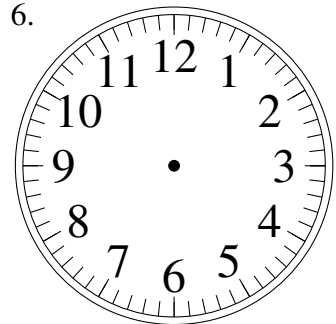
10:42.45

5.



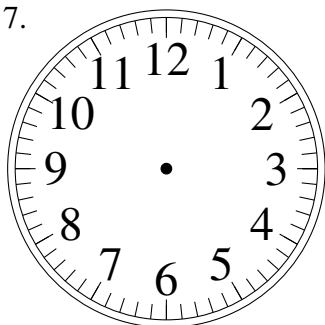
1:43.45

6.



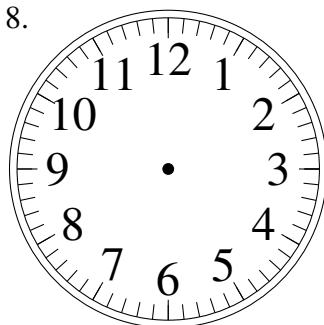
1:07.45

7.



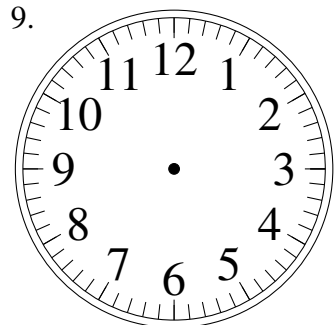
10:24.30

8.



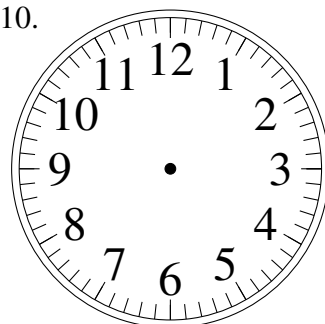
7:01.45

9.



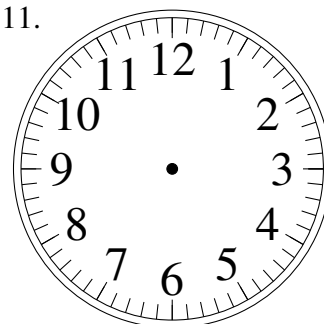
10:44.30

10.



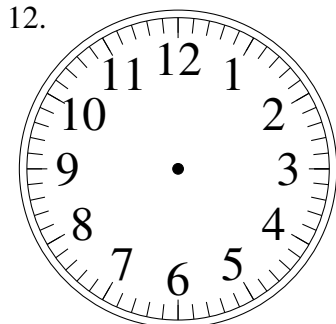
8:10.45

11.



6:44.30

12.

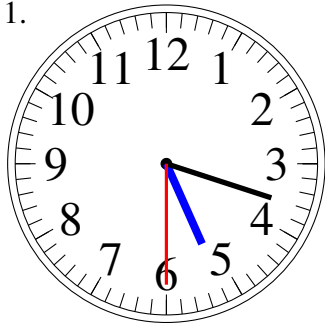


8:21.45

Sketching Analog Clocks (D) Answers

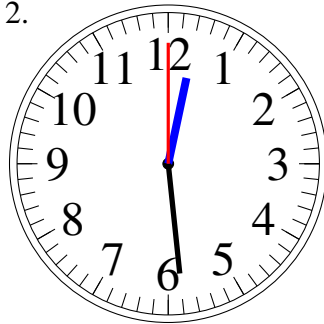
Sketch each time on the clock face above it.

1.



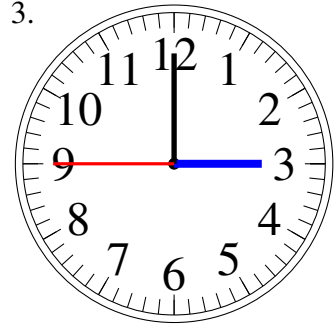
5:18.30

2.



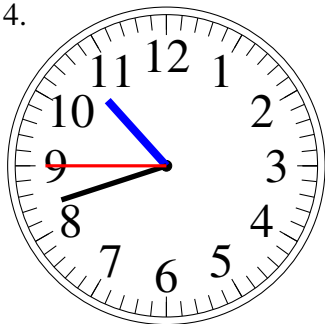
12:29.00

3.



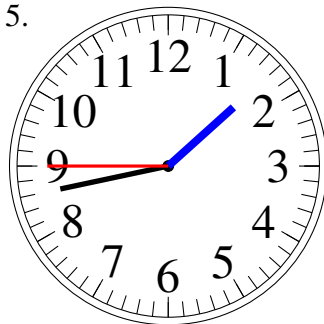
3:00.45

4.



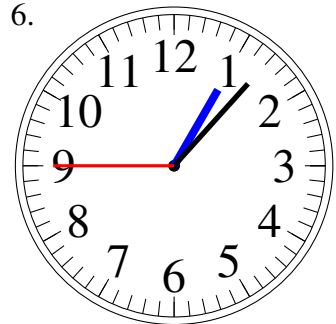
10:42.45

5.



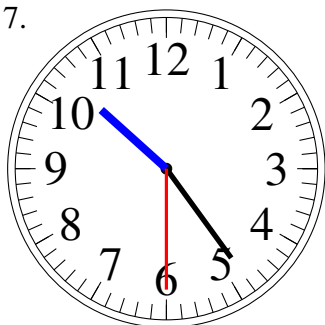
1:43.45

6.



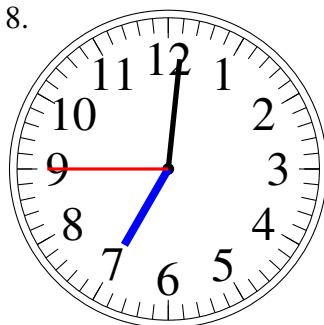
1:07.45

7.



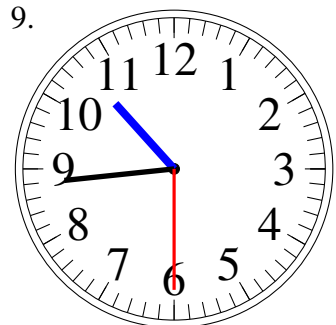
10:24.30

8.



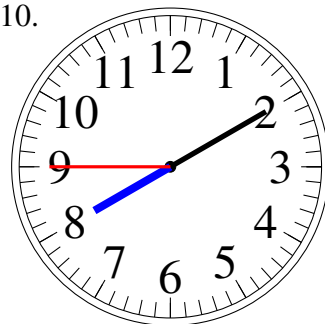
7:01.45

9.



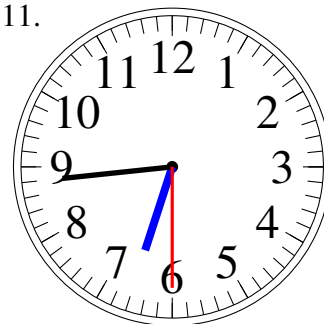
10:44.30

10.



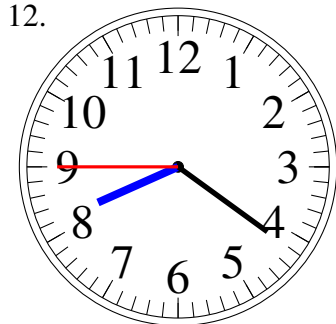
8:10.45

11.



6:44.30

12.



8:21.45

Sketching Analog Clocks (E)

Sketch each time on the clock face above it.

1.



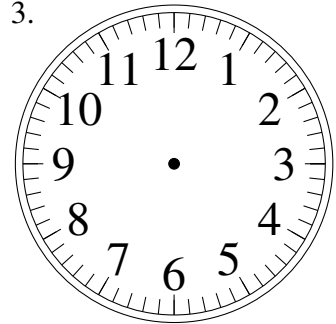
4:24.30

2.



3:02.30

3.



8:22.00

4.



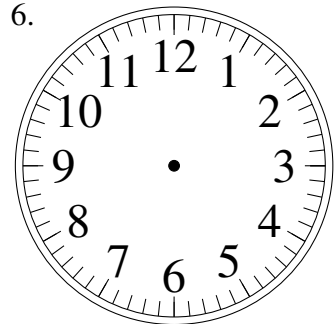
3:13.45

5.



12:14.00

6.



6:41.15

7.



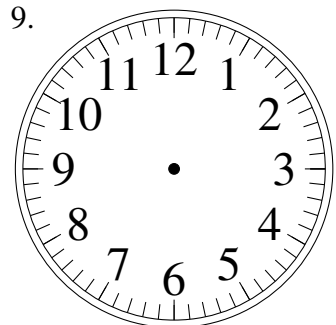
10:15.15

8.



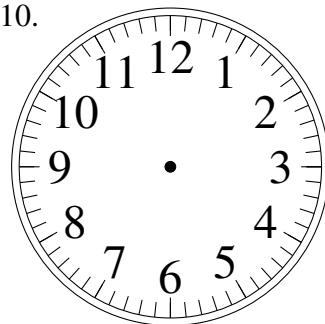
8:00.00

9.



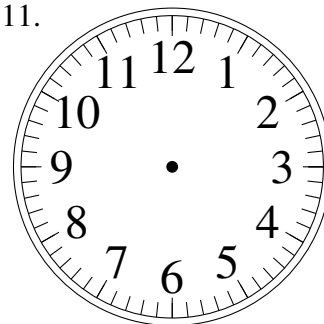
2:25.30

10.



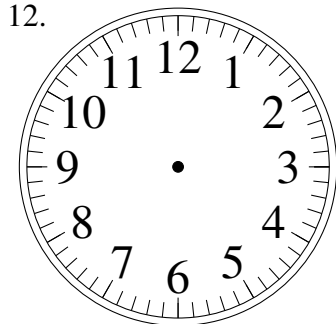
11:28.15

11.



9:38.00

12.

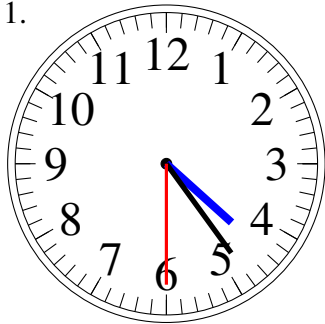


8:32.30

Sketching Analog Clocks (E) Answers

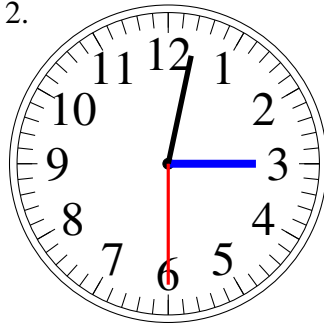
Sketch each time on the clock face above it.

1.



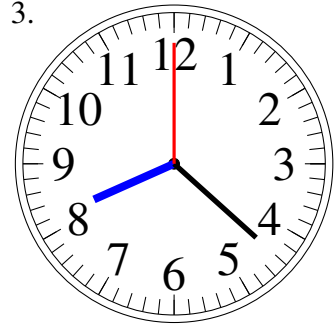
4:24.30

2.



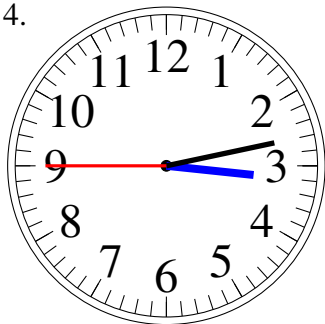
3:02.30

3.



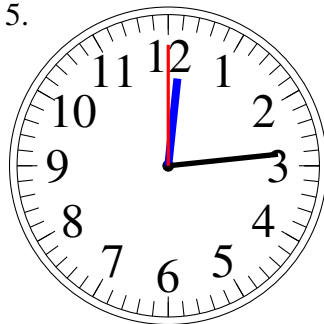
8:22.00

4.



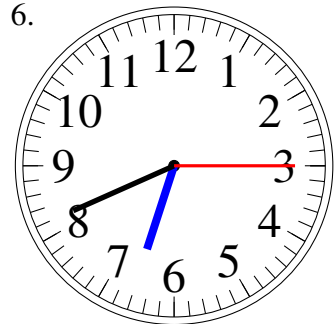
3:13.45

5.



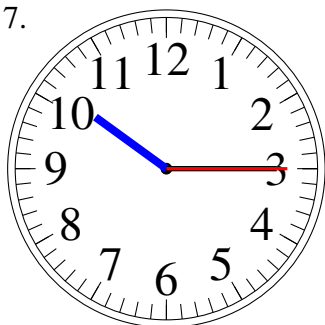
12:14.00

6.



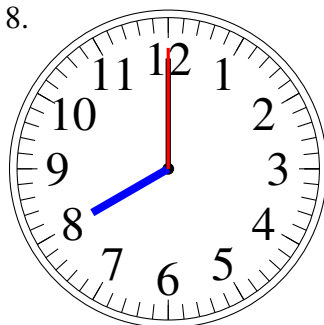
6:41.15

7.



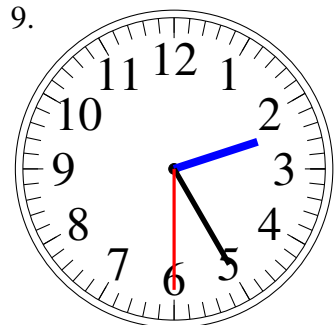
10:15.15

8.



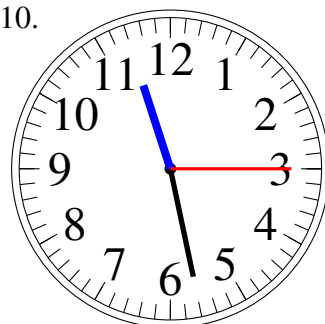
8:00.00

9.



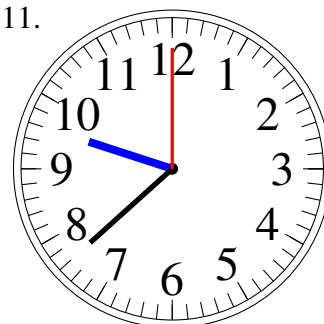
2:25.30

10.



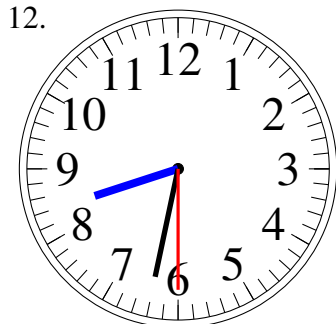
11:28.15

11.



9:38.00

12.



8:32.30

Sketching Analog Clocks (F)

Sketch each time on the clock face above it.

1.



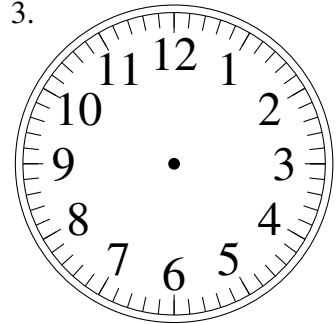
3:27.15

2.



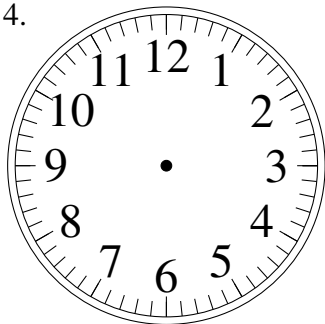
5:36.30

3.



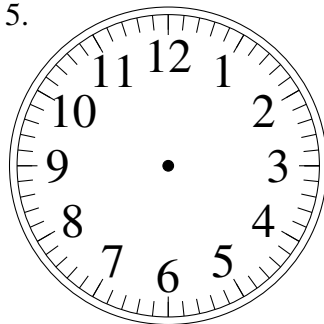
10:19.45

4.



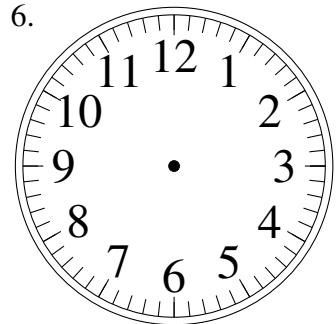
7:59.30

5.



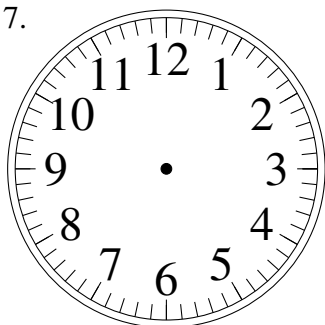
6:08.00

6.



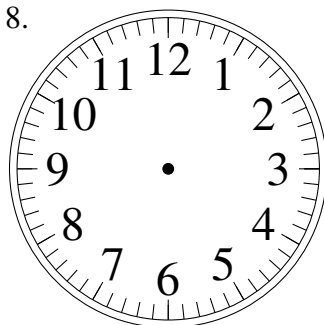
11:31.00

7.



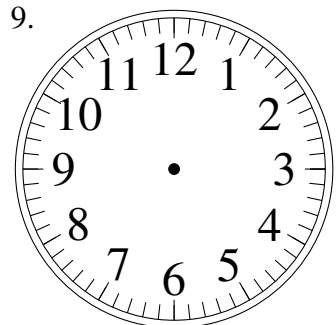
2:04.15

8.



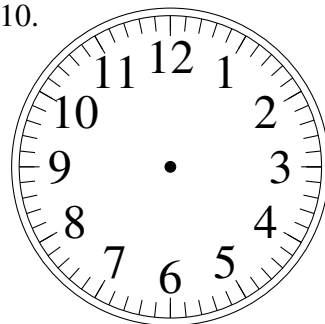
4:44.00

9.



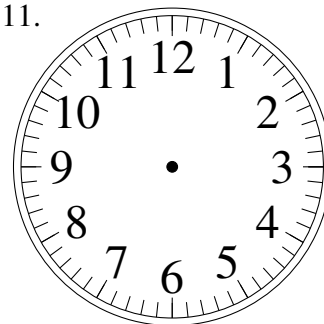
5:17.45

10.



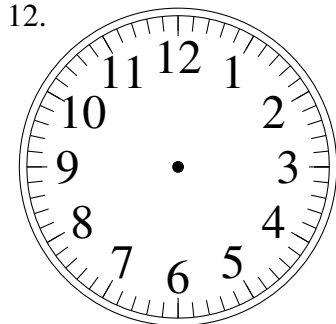
4:39.45

11.



7:30.45

12.

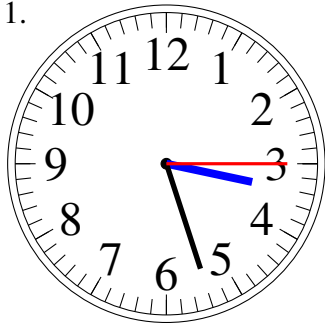


1:57.15

Sketching Analog Clocks (F) Answers

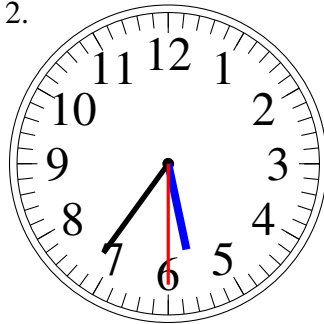
Sketch each time on the clock face above it.

1.



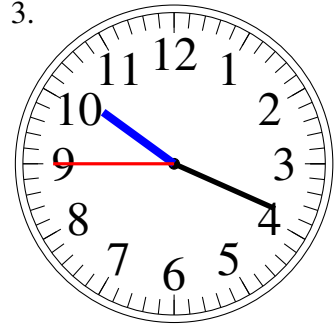
3:27.15

2.



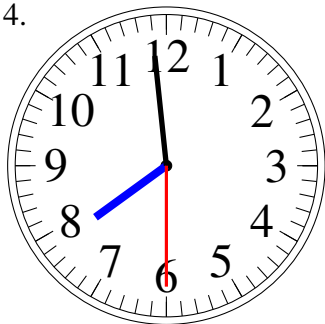
5:36.30

3.



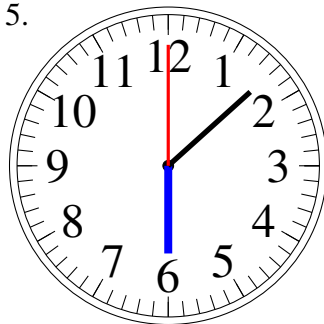
10:19.45

4.



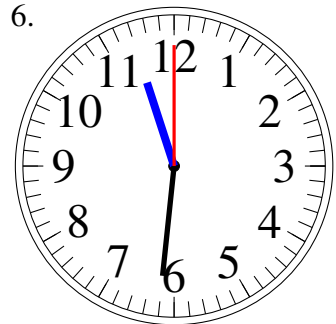
7:59.30

5.



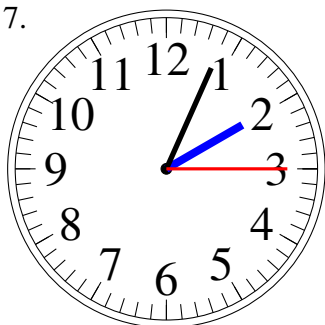
6:08.00

6.



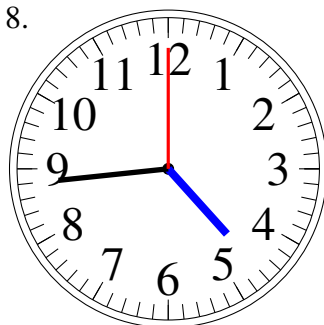
11:31.00

7.



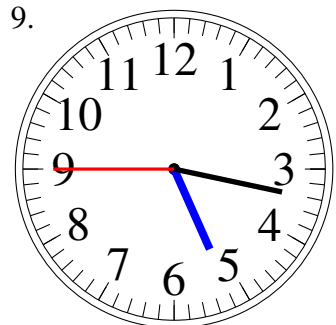
2:04.15

8.



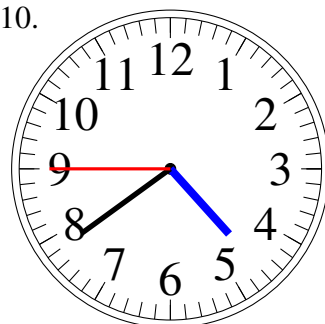
4:44.00

9.



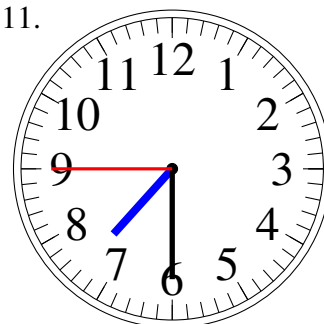
5:17.45

10.



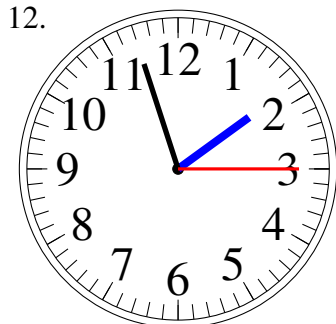
4:39.45

11.



7:30.45

12.

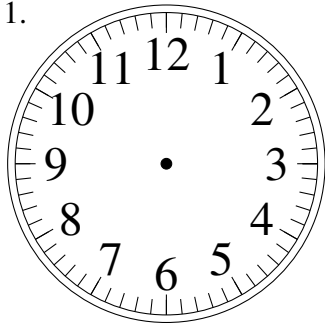


1:57.15

Sketching Analog Clocks (G)

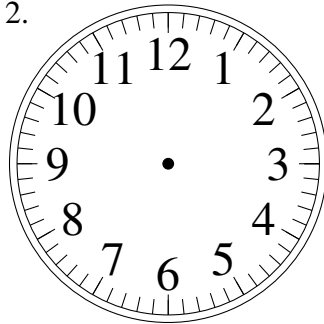
Sketch each time on the clock face above it.

1.



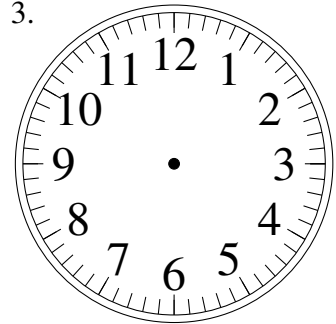
10:24.45

2.



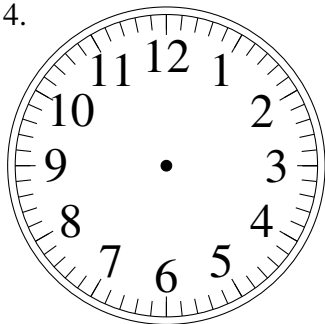
5:26.00

3.



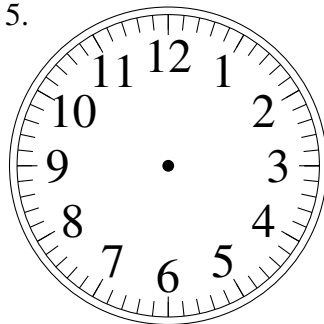
9:26.00

4.



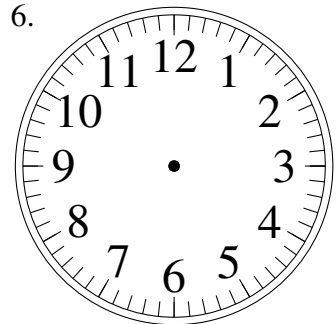
11:27.30

5.



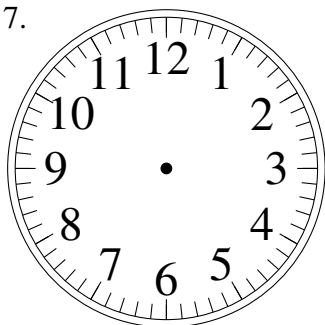
8:14.30

6.



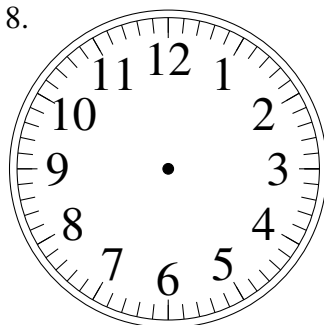
5:57.45

7.



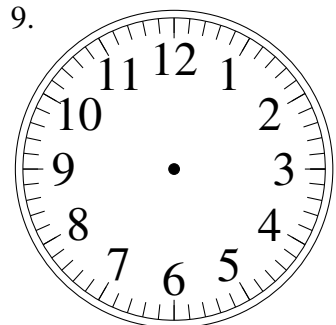
8:09.15

8.



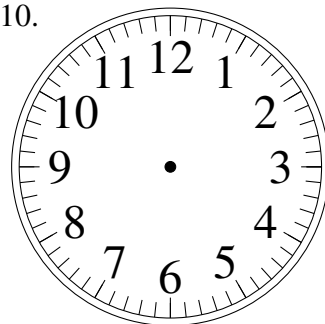
4:48.15

9.



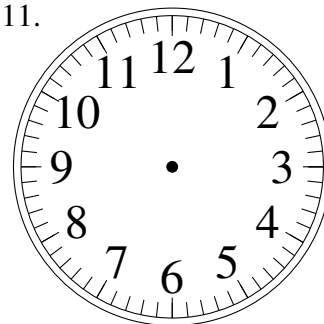
5:41.30

10.



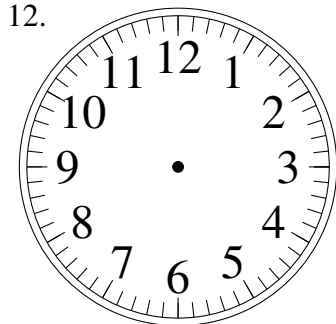
4:13.30

11.



6:32.15

12.

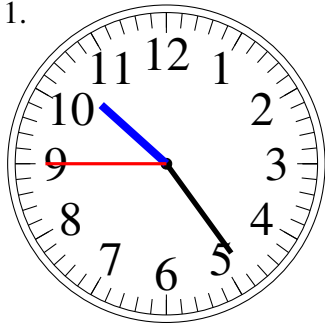


8:58.45

Sketching Analog Clocks (G) Answers

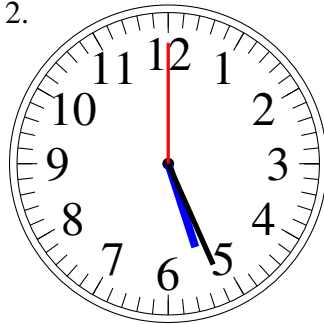
Sketch each time on the clock face above it.

1.



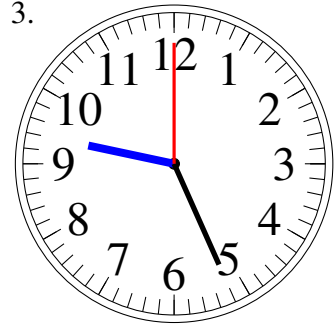
10:24.45

2.



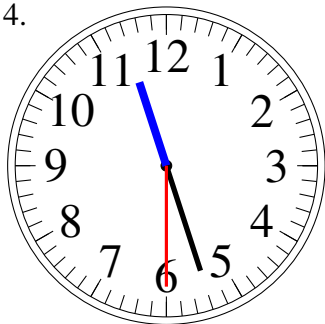
5:26.00

3.



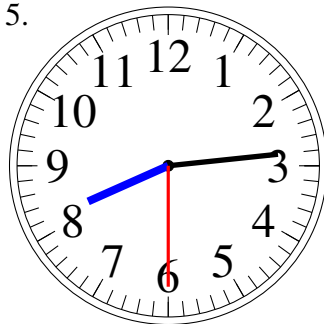
9:26.00

4.



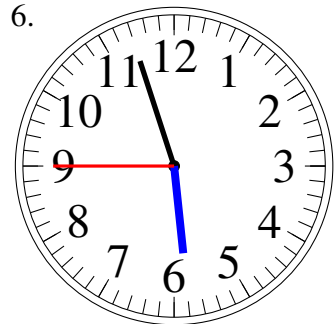
11:27.30

5.



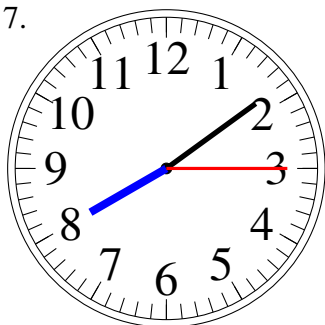
8:14.30

6.



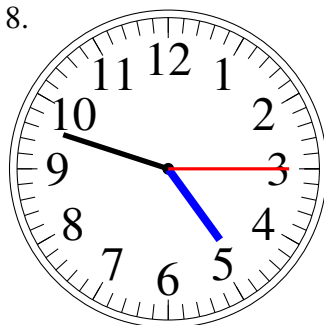
5:57.45

7.



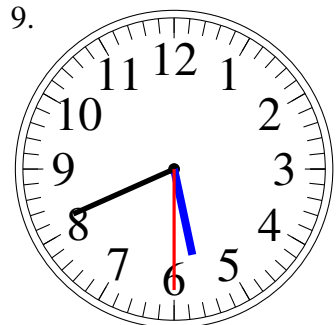
8:09.15

8.



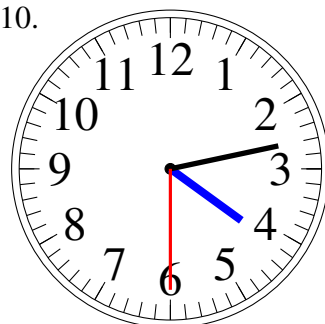
4:48.15

9.



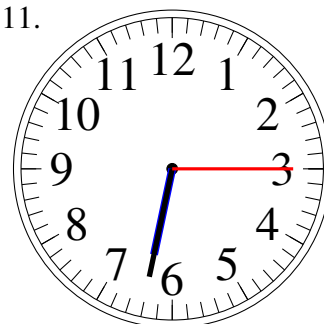
5:41.30

10.



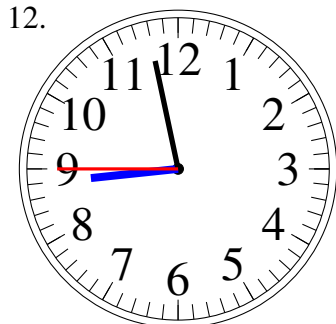
4:13.30

11.



6:32.15

12.

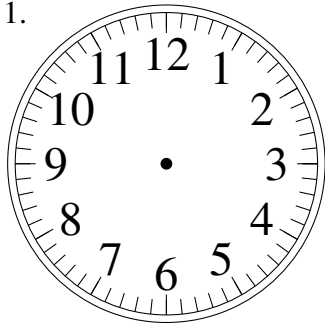


8:58.45

Sketching Analog Clocks (H)

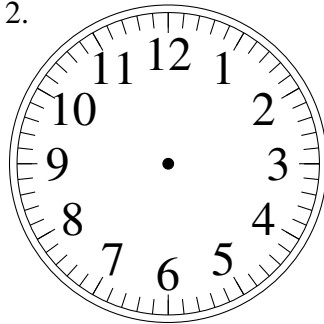
Sketch each time on the clock face above it.

1.



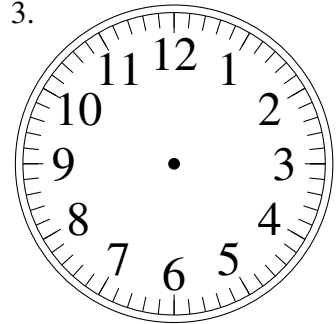
2:08.15

2.



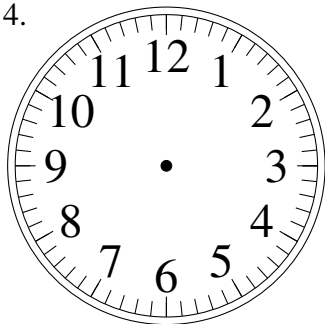
6:45.00

3.



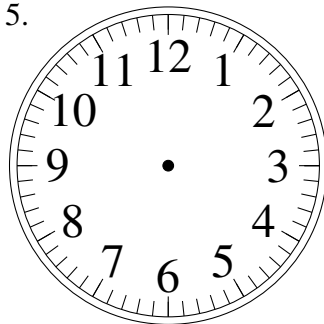
8:48.30

4.



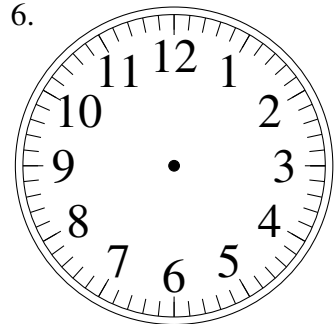
6:45.00

5.



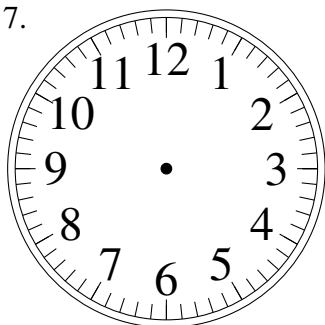
12:59.30

6.



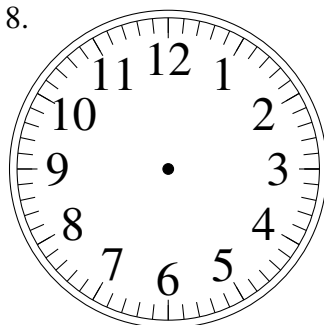
6:47.45

7.



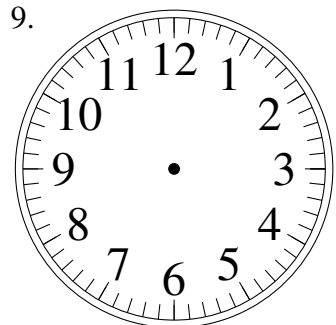
2:06.15

8.



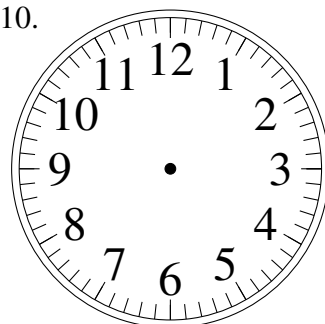
6:17.15

9.



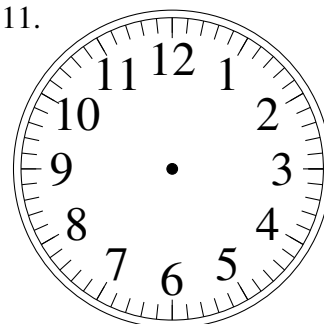
2:25.00

10.



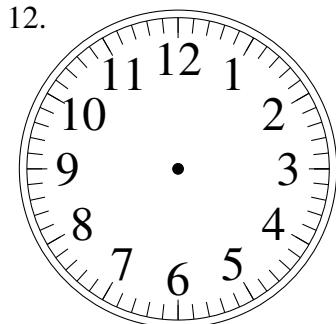
8:04.45

11.



3:58.30

12.

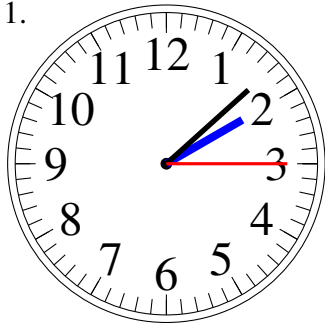


6:32.15

Sketching Analog Clocks (H) Answers

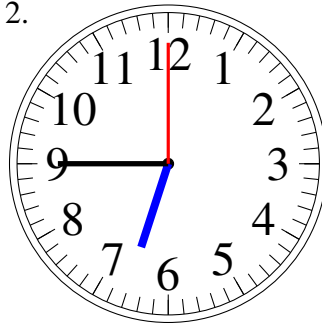
Sketch each time on the clock face above it.

1.



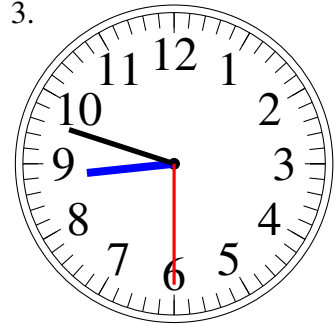
2:08.15

2.



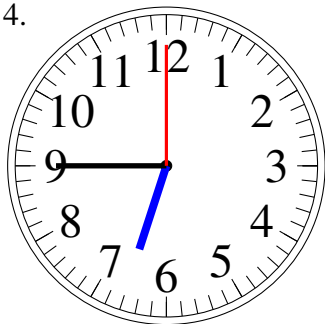
6:45.00

3.



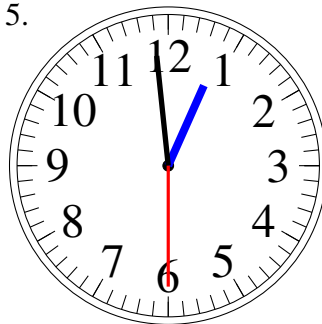
8:48.30

4.



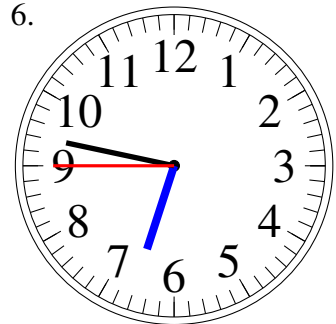
6:45.00

5.



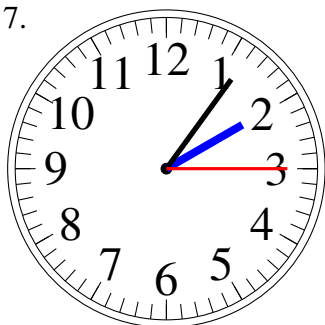
12:59.30

6.



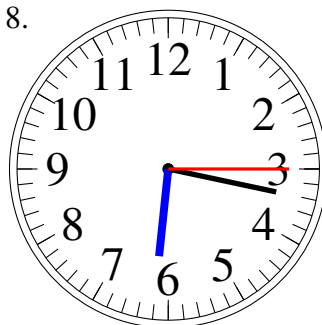
6:47.45

7.



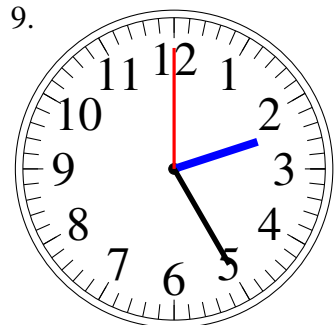
2:06.15

8.



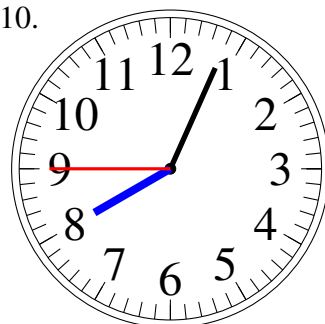
6:17.15

9.



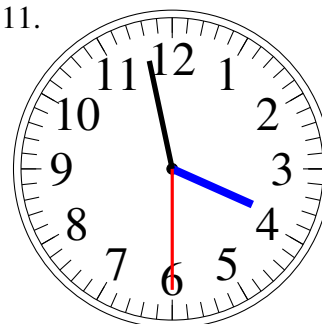
2:25.00

10.



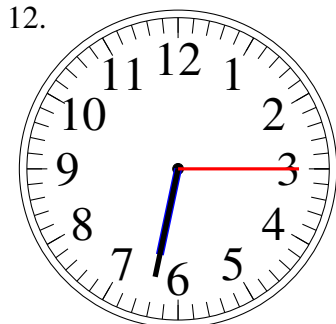
8:04.45

11.



3:58.30

12.



6:32.15

Sketching Analog Clocks (I)

Sketch each time on the clock face above it.

1.



4:27.00

2.



11:41.45

3.



4:08.45

4.



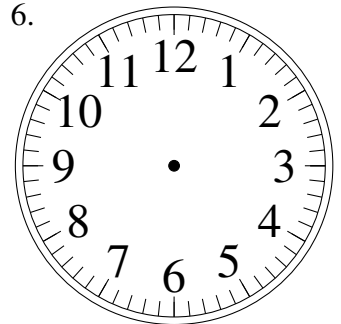
10:03.30

5.



10:58.45

6.



6:13.45

7.



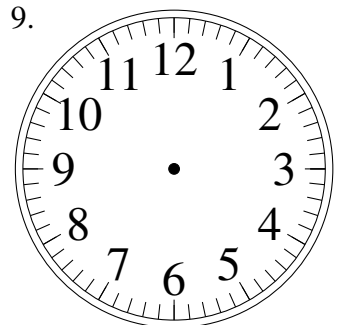
1:07.00

8.



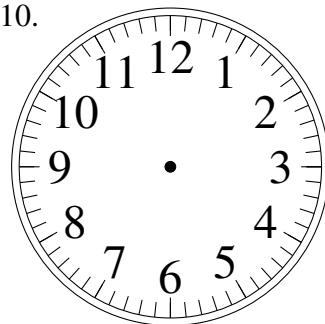
4:07.30

9.



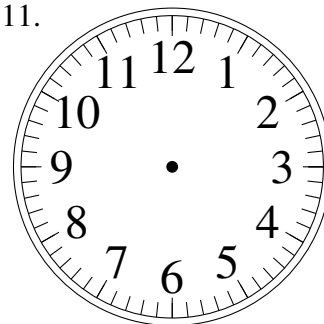
1:25.15

10.



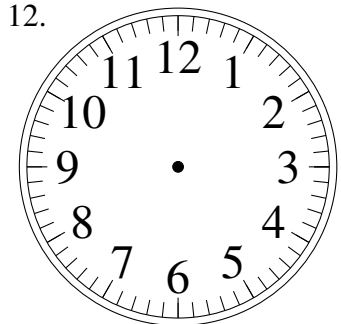
9:27.30

11.



11:57.00

12.

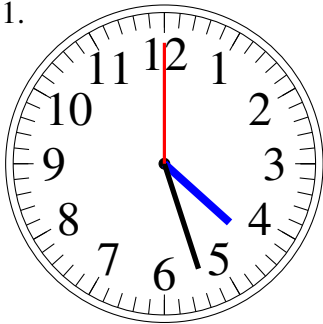


9:18.15

Sketching Analog Clocks (I) Answers

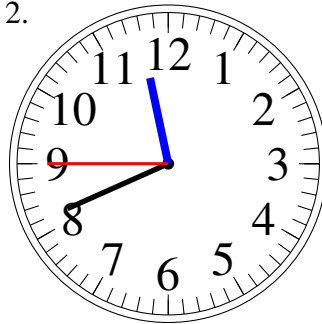
Sketch each time on the clock face above it.

1.



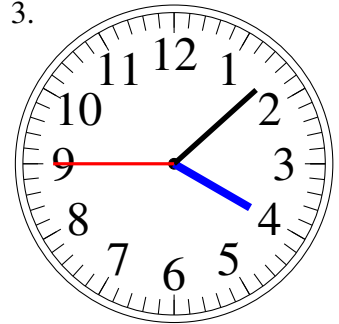
4:27.00

2.



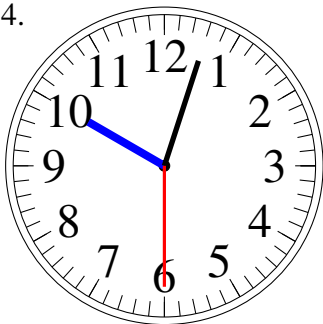
11:41.45

3.



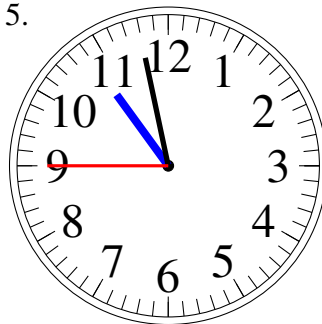
4:08.45

4.



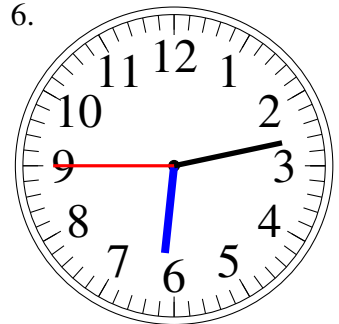
10:03.30

5.



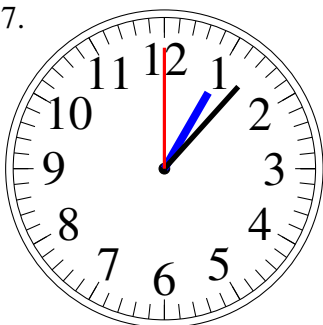
10:58.45

6.



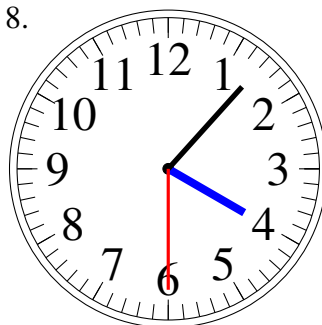
6:13.45

7.



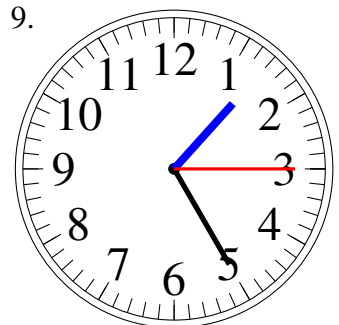
1:07.00

8.



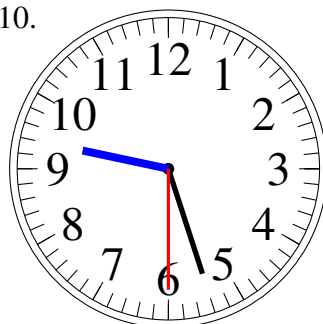
4:07.30

9.



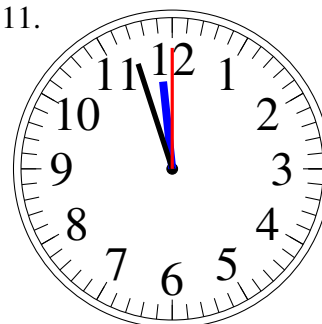
1:25.15

10.



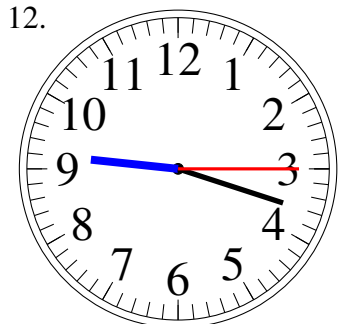
9:27.30

11.



11:57.00

12.



9:18.15

Sketching Analog Clocks (J)

Sketch each time on the clock face above it.

1.



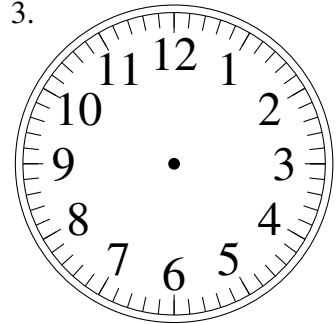
9:43.45

2.



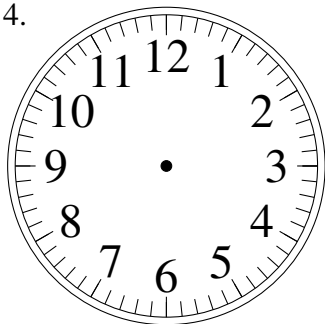
4:16.15

3.



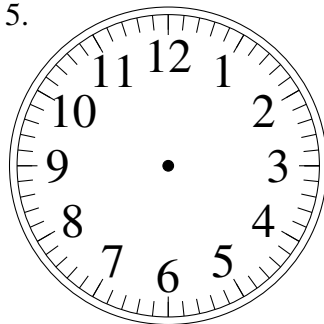
11:32.15

4.



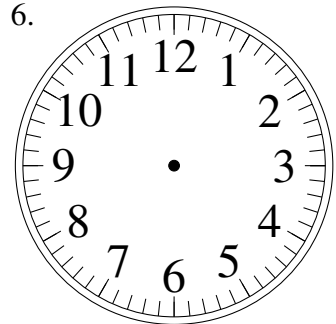
4:04.00

5.



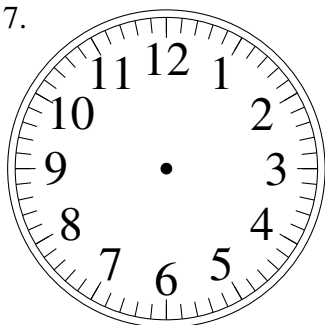
7:23.00

6.



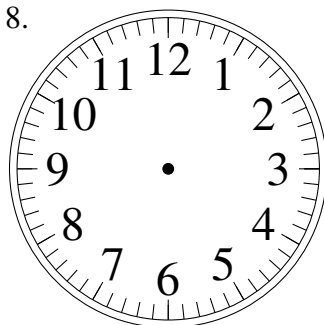
3:16.00

7.



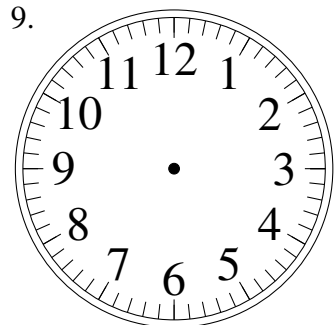
9:01.00

8.



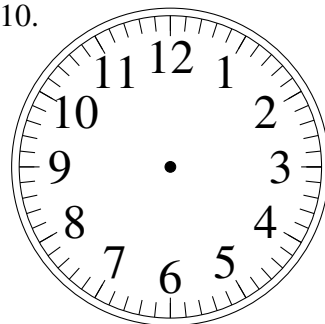
5:03.15

9.



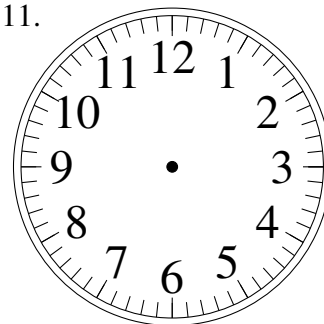
2:39.30

10.



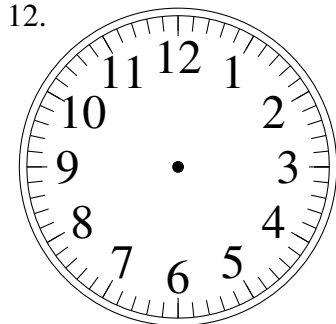
12:01.45

11.



12:24.15

12.

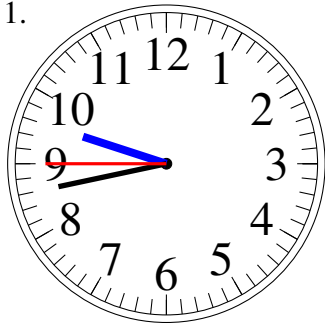


8:18.00

Sketching Analog Clocks (J) Answers

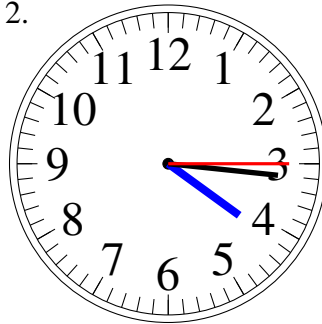
Sketch each time on the clock face above it.

1.



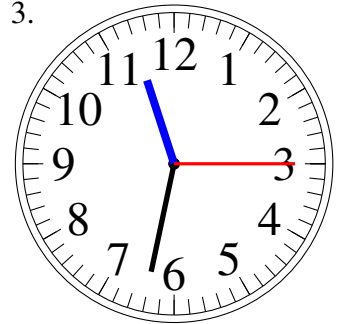
9:43.45

2.



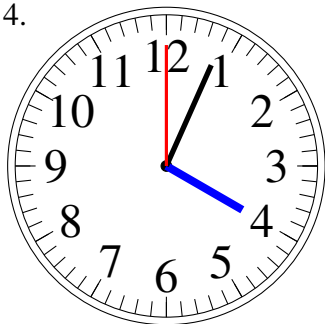
4:16.15

3.



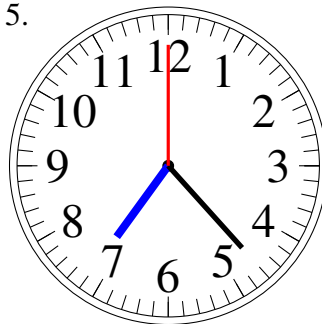
11:32.15

4.



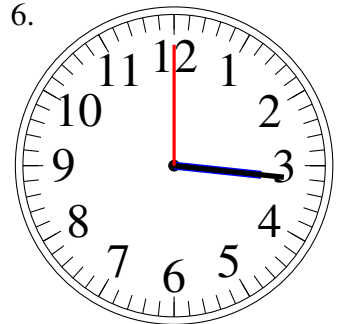
4:04.00

5.



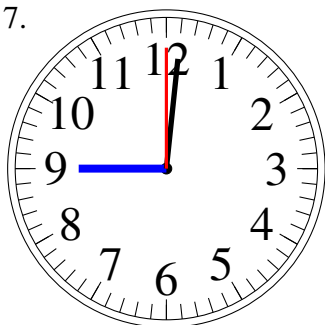
7:23.00

6.



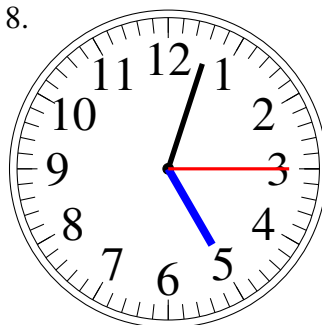
3:16.00

7.



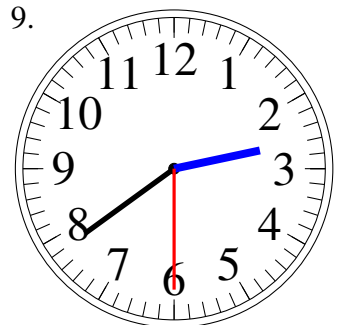
9:01.00

8.



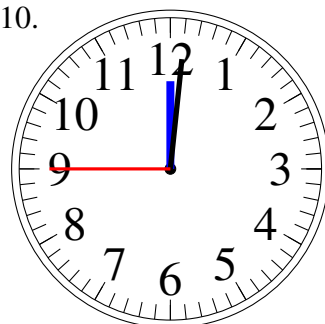
5:03.15

9.



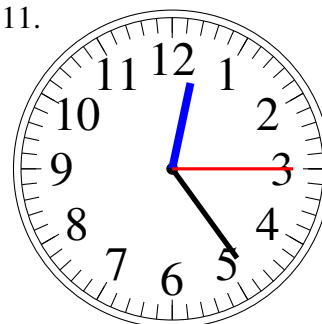
2:39.30

10.



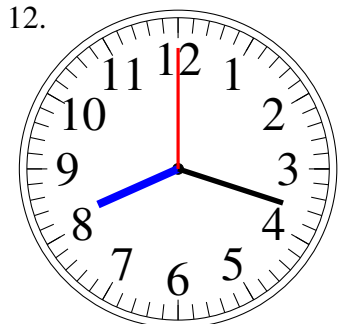
12:01.45

11.



12:24.15

12.



8:18.00