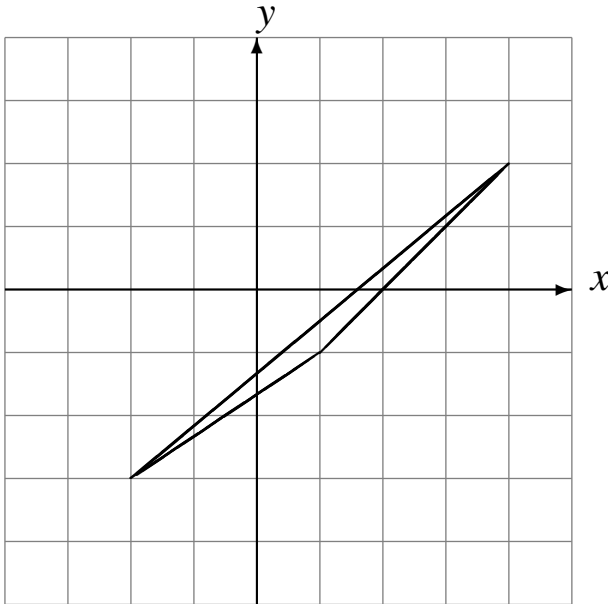


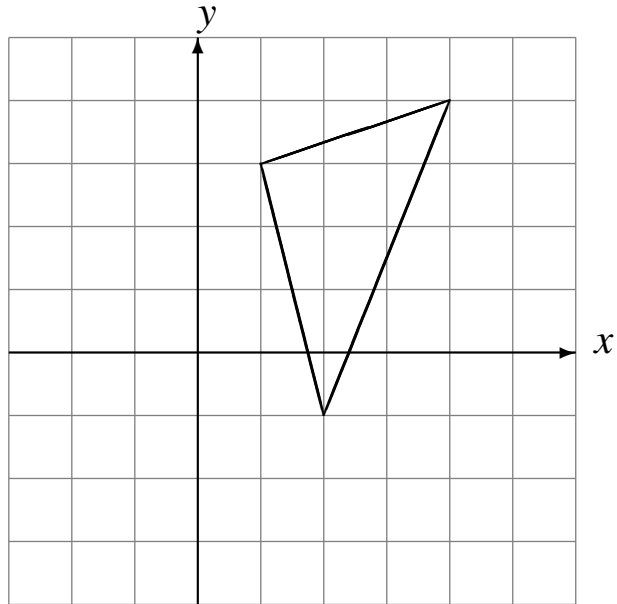
Translations (C)

Draw each translated image.

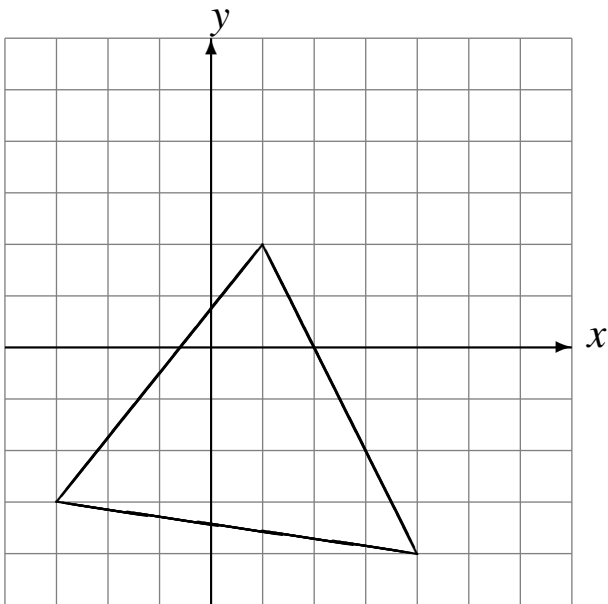
Translate by $(-1, -1)$.



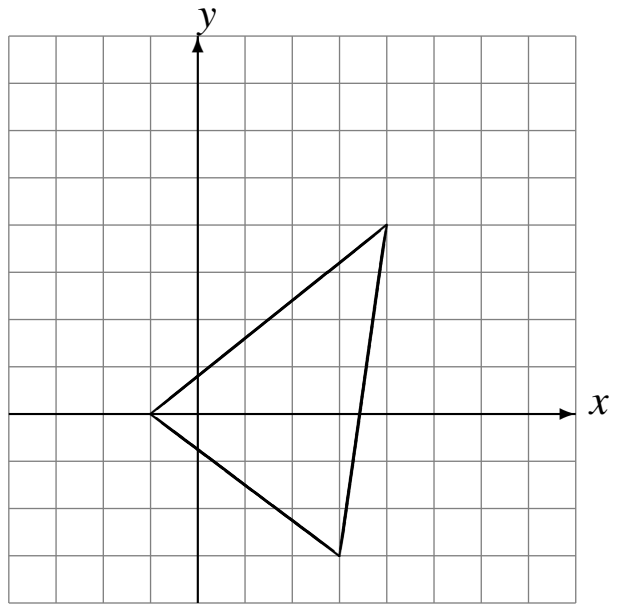
Translate by $(-3, -2)$.



Translate by $(2, 2)$.



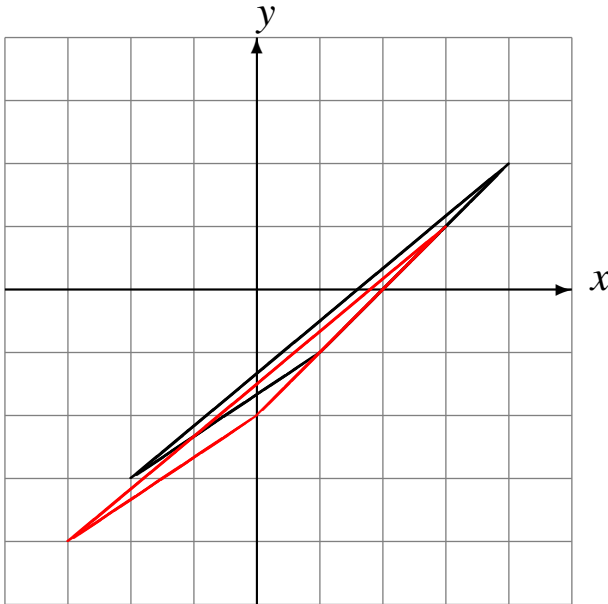
Translate by $(0, 3)$.



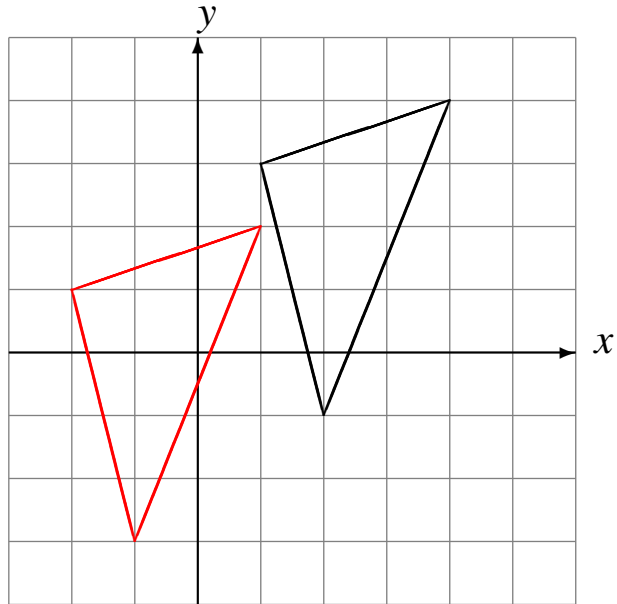
Translations (C) Answers

Draw each translated image.

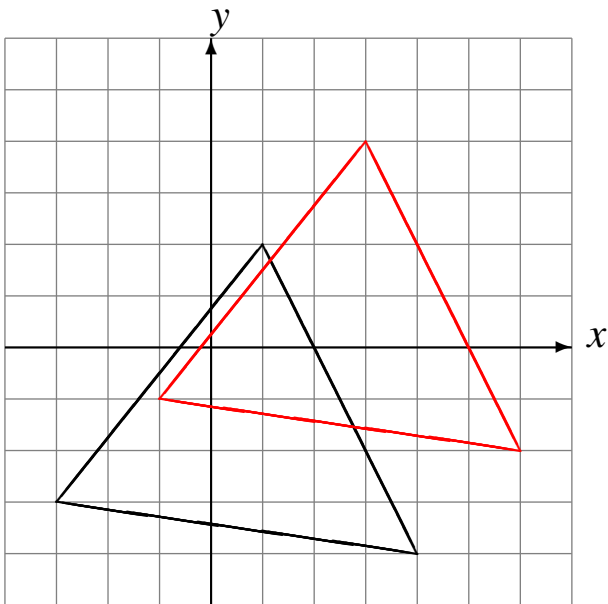
Translate by $(-1, -1)$.



Translate by $(-3, -2)$.



Translate by $(2, 2)$.



Translate by $(0, 3)$.

