

# Dependent Linear Systems (C)

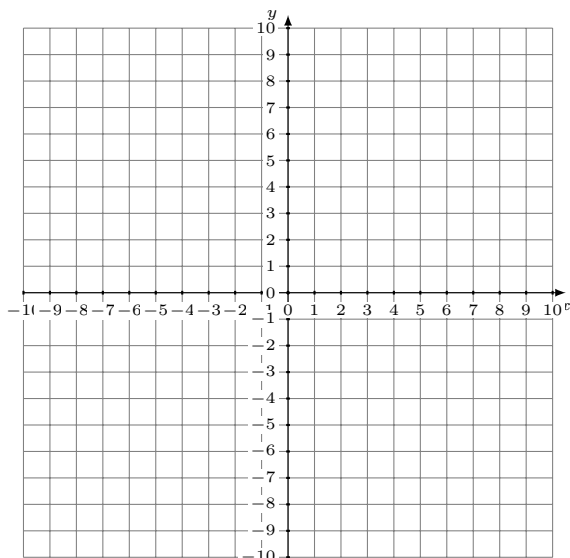
Graph each system and identify the dependent system.

1.  $7x - 3y = 6$   
 $y = \frac{4}{3}x - 5$



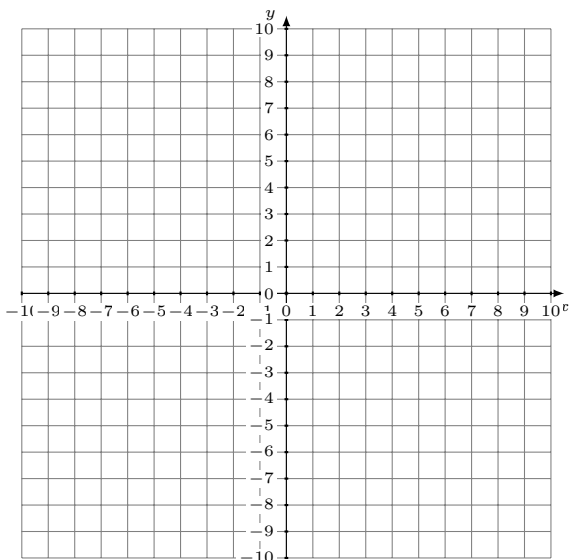
Solution: (----,----)

2.  $y = \frac{9}{2}x - 6$   
 $9x - 2y = 12$



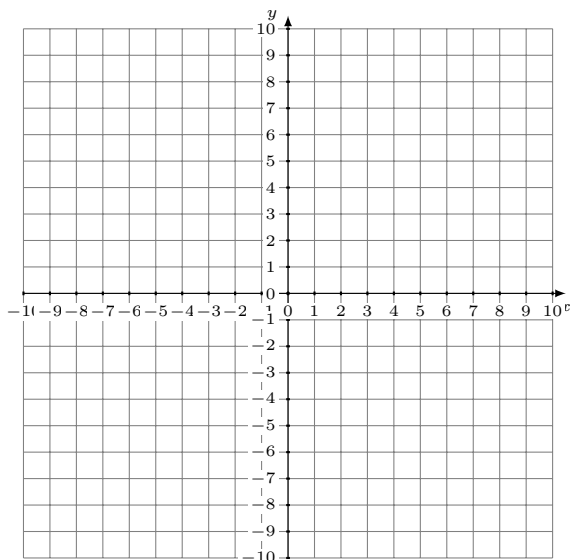
Solution: (----,----)

3.  $3x - 2y = -18$   
 $y = \frac{11}{8}x + 8$



Solution: (----,----)

4.  $3x + 7y = 28$   
 $y = -\frac{1}{7}x + 6$

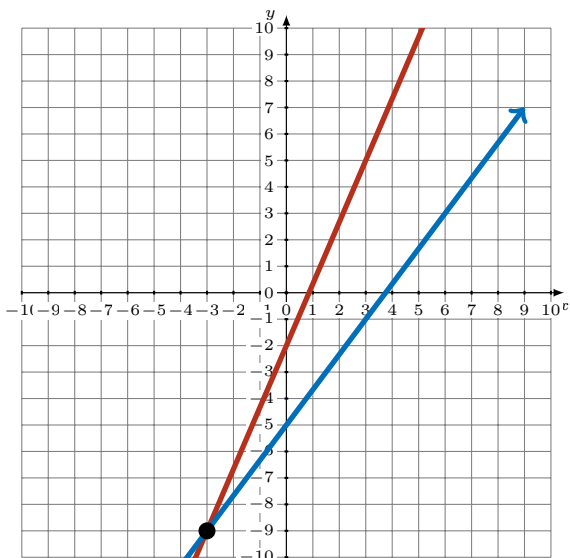


Solution: (----,----)

# Dependent Linear Systems (C) Answers

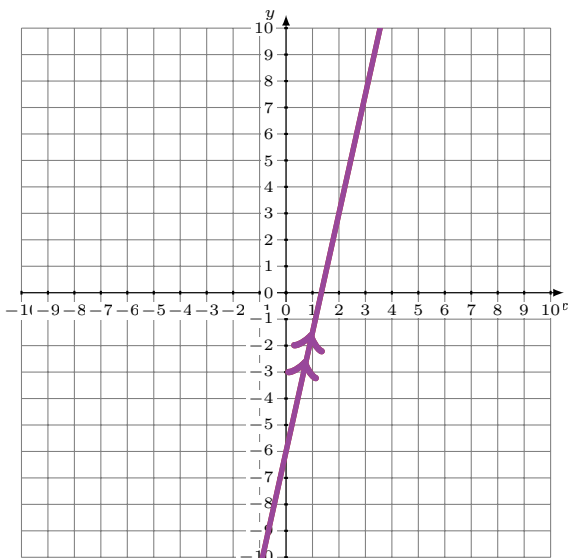
Graph each system and identify the dependent system.

1.  $7x - 3y = 6$   
 $y = \frac{4}{3}x - 5$



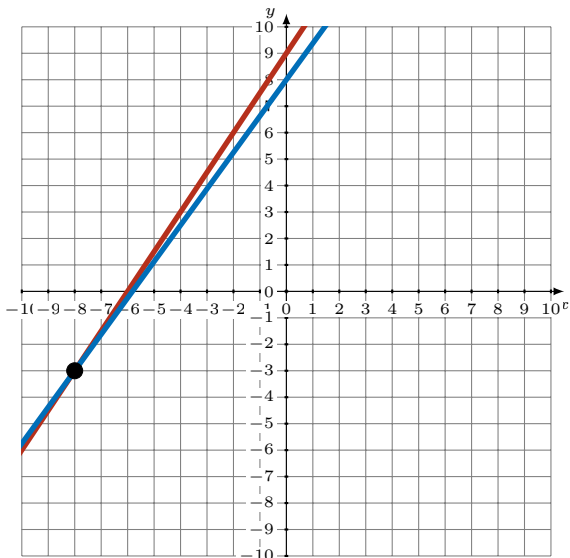
Solution:  $(-3, -9)$

2.  $y = \frac{9}{2}x - 6$   
 $9x - 2y = 12$



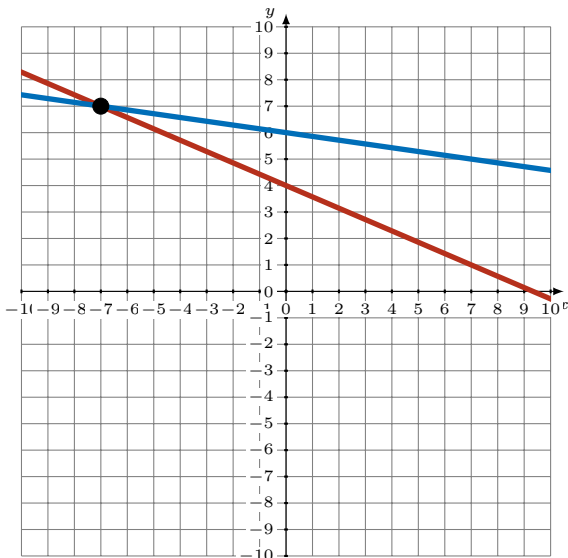
Solution: Infinite Solutions (Dependent)

3.  $3x - 2y = -18$   
 $y = \frac{11}{8}x + 8$



Solution:  $(-8, -3)$

4.  $3x + 7y = 28$   
 $y = -\frac{1}{7}x + 6$



Solution:  $(-7, 7)$